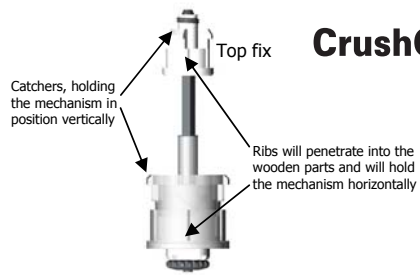
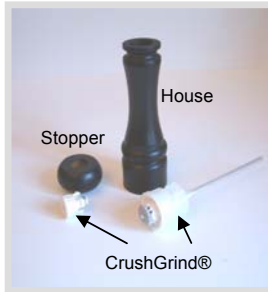


Mounting of CrushGrind® SHAFT

CrushGrind® SHAFT is a traditional mechanism with shaft. For mounting into wood, metal and other materials. The plastic top is fixed into the top of the mill. The mill is filled by pulling the top upwards. Turning point at the top.



Manual mounting machine



Wooden parts and CrushGrind® SHAFT



Push CrushGrind® into the Wooden house from below



CrushGrind® should be placed in position like this



Place parts in mounting machine



Make sure the grinder stands straight



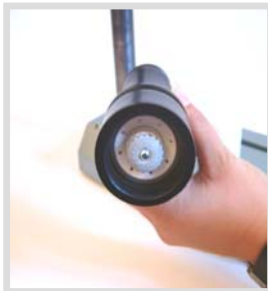
Press down the handle



Press down until you feel a click



Make sure the catchers on CrushGrind® are fully rebound



Check that CrushGrind® is sitting correctly at the bottom



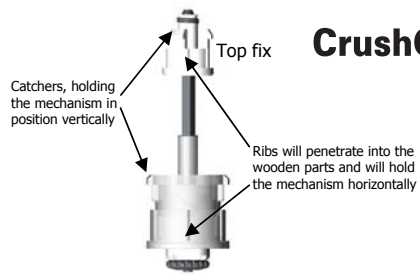
Check that the shaft is centered at the top



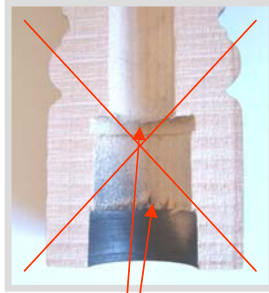
Correct mounting seen through the grinder

Mounting of CrushGrind® SHAFT

CrushGrind® SHAFT is a traditional mechanism with shaft. For mounting into wood, metal and other materials. The plastic top is fixed into the top of the mill. The mill is filled by pulling the top upwards. Turning point at the top.



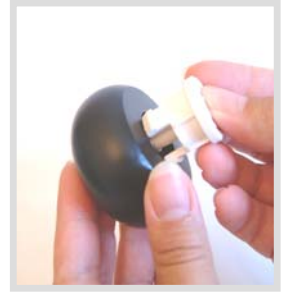
Make sure the drilling is correctly centered and with sharp edges (without burrs/frays)



This drilling is too frayed
Not acceptable!



Wooden stopper and top fix



Press the top fix in position



Place parts in the mounting machine



Press down the handle until you hear a "click"



Correct mounting
- catchers have rebound into the groove



Stopper mounted with top fix



Mounted stopper and grinder



Use a gauge to check if CrushGrind® has been mounted correctly



If products stands firmly (not wobbling) on the gauge then it has been mounted correctly

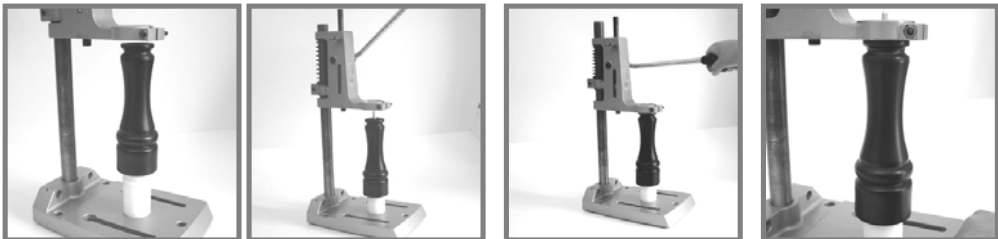
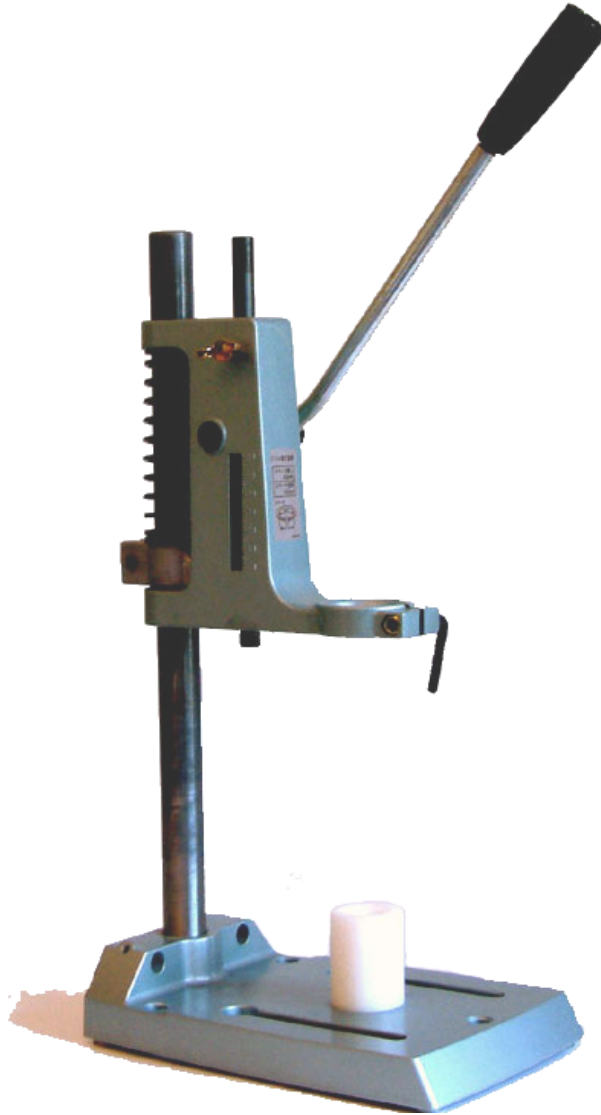


Press stopper onto the grinder

Manual mounting machine



CrushGrind® recommend using a simple machine for even and correct mounting. Some of our partners, who work with big quantities have developed hydraulic operated equipment – but it does not have to be that complicated. Below is an example of a very simple machine – where you place your product in position and pull down the handle for mounting.

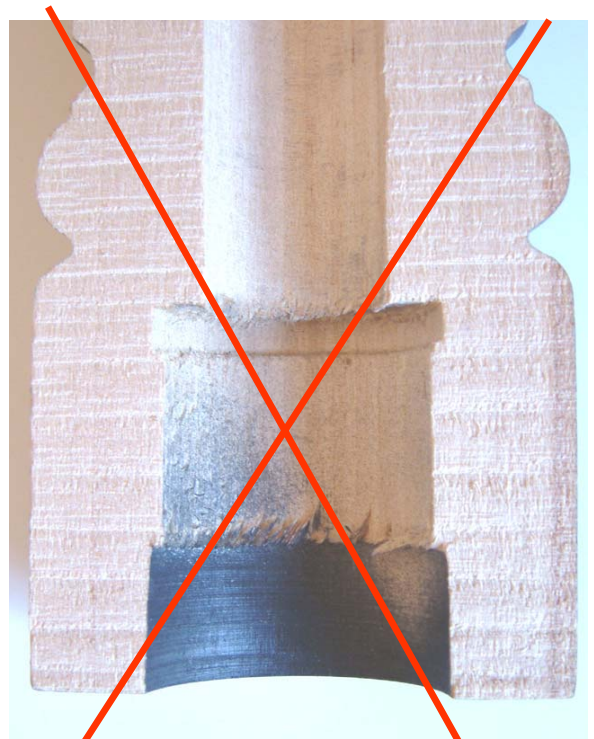


Correct inner drilling

The inner drilling in a wooden product is essential!
It is important that the drilling is centered correctly
and that the edges are sharp.



Correct!
Sharp edges (no frays)
Drilling correctly centered



Wrong!
Frayed edges!